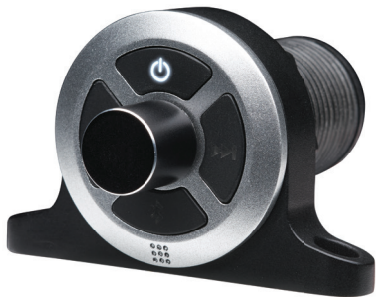


powerbass®  
X T R E M E



**XL-50BT**

---

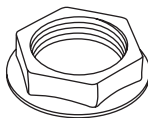
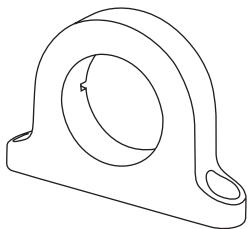
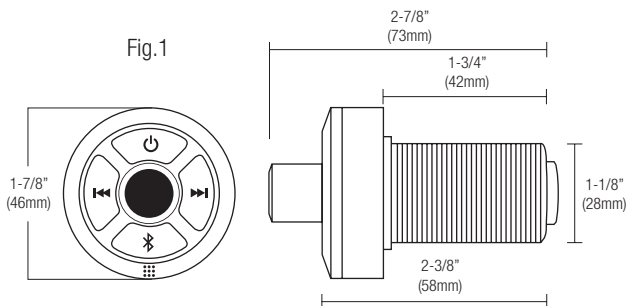
**UNIVERSAL BLUETOOTH RECEIVER  
with VOLUME CONTROL**

# **Application Guide**

*Please read through this manual to familiarize yourself with your new Bluetooth Receiver. Should your PowerBass Xtreme Bluetooth Receiver ever require service, you will need to have the original dated receipt.*

# SPECIFICATIONS AND DIMENSIONS

- **Universal Bluetooth Receiver with Volume Control**
- **Mounting: Under Dash or Flush Mount**
- **Connections: 12V Power, Ground and Remote Out**
- **Outputs: RCA**
- **Compatible with Android, iPhone and most other Bluetooth enabled devices**
- **Range: 30 Feet**
- **Adjustments: Power, Track up/down, Volume up/down and Pause**
- **USB Charging Feature DC 5 Volts, 1Amp**



# INSTALLATION INSTRUCTIONS

## TOOLS NEEDED:

Wire Cutter / Wire Stripper

1-1/8" Hole Saw

Power Drill

## FLUSH MOUNT

- 1) Find a location where you want to mount the controller, make sure you have enough clearance away from any wire, fuel or brake lines and having at least 2 inches of mounting depth.
- 2) Use a 1-1/8 inch hole saw to make a hole where you want to locate the controller.
- 3) Use the supplied foam gasket to give a waterproof seal and the plastic threaded nut (Fig.3 ) to secure the controller in place. Hand tighten in place so the controller does not spin or turn.

## UNDERDASH/SURFACE MOUNT

- 1) Find a location where you want to mount the controller, make sure you have enough clearance away from any wire, fuel or brake lines and having at least 2 inches of mounting depth behind the controller. The controller can be mounted either under or above the dash.
- 2) Use the surface mount mounting bracket (Fig. 2). Attach to the controller and secure it in place with the plastic threaded nut, turn the controller to make sure the power button is at the 12 o'clock position from where it will be mounting to. Then tighten by hand.
- 3) Use the (2) supplied screws to mount it through the holes on either side of the bracket.

## WIRING

- 1) Connect the red power wire to either the battery or a switched power source.
- 2) Connect the black ground wire to either a chassis ground or directly to the battery (on most off road, marine, motorcycles and recreation vehicles the battery ground will be the best location to get your grounding point from).
- 3) Connect the orange wire to the remote turn-on lead of your amp. This will turn your amp on and off from the XL-50BT.
- 4) Connect the red and white RCA output jacks to your amps input jacks. Use the supplied RCA to 3.5mm signal adapter, if your amp uses a 3.5mm audio input.
- 5) Connect the USB cable to charge most music devices.

# CONTROLLER LAYOUT AND OPERATION

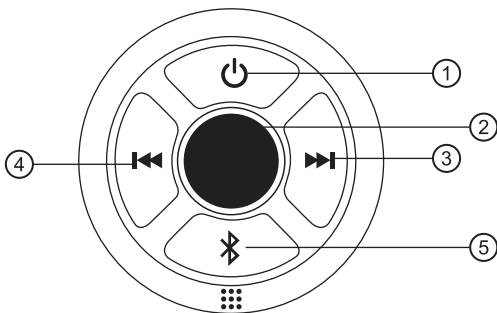


Fig.3

## 1) POWER BUTTON

Press the button down to power the controller on/off.

## 2) VOLUME KNOB

Turn the volume knob towards the right to raise the volume. Turn the volume knob towards the left to lower the volume. There will be an audible beep to indicate maximum and minimum volume.

## 3) TRACK FORWARD BUTTON

Press the Track Forward button momentarily to skip to the next song.

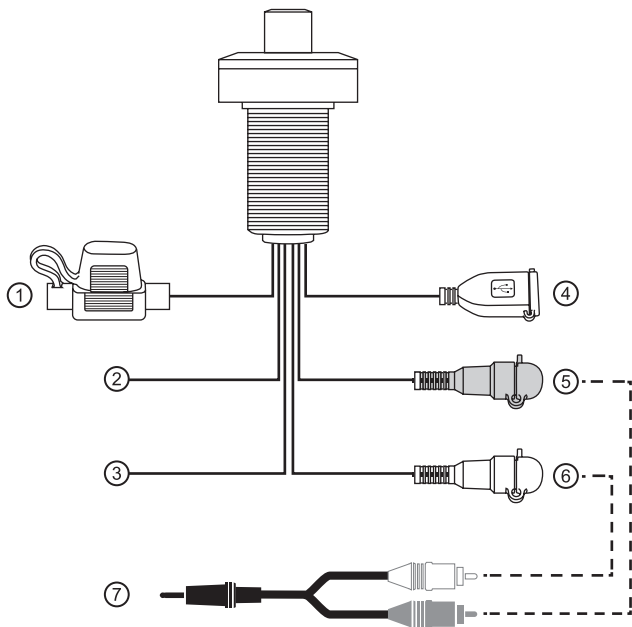
## 4) TRACK BACKWARDS BUTTON

Press the Track Back button momentarily to skip back to the previous song.

## 5) BLUETOOTH BUTTON

Push the Bluetooth button to pair a new device. Flashing blue L.E.D's indicate controller is ready to pair. Solid blue L.E.D's indicate a device is already paired.

# XL-50BT WIRING DIAGRAM



- 1) RED WIRE** - 12V Battery or Ignition Lead
- 2) BLACK WIRE** - Ground Lead
- 3) ORANGE WIRE** - Remote Amp Turn-on Lead
- 4) USB** - Amp Charging Output Lead
- 5) RED RCA** - Right Channel Audio Output Lead
- 6) WHITE RCA** - Left Channel Audio Output Lead
- 7) RCA to 3.5mm Adapter** - Use if your amp has 3.5mm Input

# BLUETOOTH PAIRING AND OPERATION

- 1)** Turn the XL-50BT on by pressing the power button, there will be an audible beep to confirm the XL-50BT is on.
- 2)** Press the Bluetooth button momentarily and you will hear an audible sequence of tones to confirm XL-50BT is now ready to pair with your device along with flashing back lights.
- 3)** Go into the Bluetooth settings of your device and search for XL-50BT to pair. Once paired, there will be an audible beep to confirm that the XL-50BT and your Bluetooth device has paired successfully.
- 4)** Once the pairing process is complete, use either the XL-50BT or connected device to control volume up and down, track back or forward, and pause/mute.

## Auto-Turn Off Circuit

When finished using the XL-50BT, manually power off the unit by pressing the Power Button, there will be an audible beep to confirm that the unit is off. To prevent battery drain, the XL-50BT is equipped with an Auto-Turn off Circuit. After 10 minutes of non-activity this circuit will turn off the XL-50BT automatically. To resume play back after the Auto-Turn off circuit has been engaged, simply press the Power Button.

This manual is the exclusive property of PowerBass USA, Inc. Any reproduction of this manual, or use other than its intentions is strictly prohibited without the express consent of PowerBass USA, Inc. Copyright 2016 PowerBass USA, Inc.

# POWERBASS XTREME LIMITED WARRANTY POLICY

PowerBass USA, Inc. offers limited warranty on PowerBass products under normal use on the following terms: **PowerBass Xtreme Accessories are to be free of defects in material and workmanship for a period of one (1) year.**

This warranty applies only to PowerBass products sold to consumers by Authorized PowerBass Dealers in the United States of America. Products purchased by consumers from a PowerBass dealer in another country are covered only by that country's Distributor and not by PowerBass USA.

This warranty covers only the original purchaser of PowerBass product. In order to receive service, the purchaser must provide PowerBass with the receipt stating the consumer name, dealer, product and date of purchase.

Products found to be defective during the warranty period will be repaired or replaced (with a product deemed to be equivalent) at PowerBass's discretion and will not be liable for incidental or consequential damages. PowerBass will not warranty this product under the following situations:

- **Speakers received with bent/cracked frames or significant water damage**
- **Abuse such as holes in the cone, surround or ripped spider**
- **Voice coil damage due to amplifier clipping or distortion**
- **Amplifiers received with apparent rust or corrosion**
- **Any evidence of liquid damage or exposure to excessive heat**
- **Attempted repairs or alterations of any nature**
- **Product that has not been installed according to this owners manual**

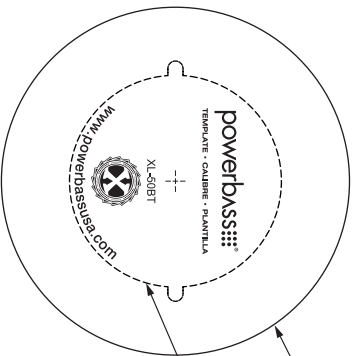
Any implied warranties including warranties of fitness for use and merchantability are limited in duration to the period of the express warranty set forth above. Some states do not allow limitations on the length of an implied warranty, so this limitation may not apply. No person is authorized to assume for PowerBass any other liability in connection with the sale of this product.

**Please call (909) 923-3868 for PowerBass Customer Service.** You must obtain an RA# (Return Authorization Number) to return any product to PowerBass. **The RA number must be prominently marked on the outside of the shipping carton or the delivery will be refused.** Please pack your return carefully; we are not responsible for items damaged in shipping. Return the defective product along with a copy of the original dated retail sales receipt, plus \$12.00 for handling and diagnostic evaluation to:

**PowerBass USA, Inc.,  
Attn: Returns (RA# \_\_\_\_\_)  
2133 S. Green Privado, Ontario, CA 91761**

Residents of HI, AK and US territories will be charged for return shipping. All inquires regarding service and warranty should be sent to the above address.

**Removed or altered serial numbers will void this warranty**



1 7/8" (46mm) Edge to Edge Outside Diameter

1 1/8" (28mm) Cut Out Diameter

**Mounting Depth**  
**Profondeur D'encastrement**  
**Profundida De Montaje**

XL-50BT	2"	50mm
---------	----	------



PowerBass Xtreme – A division of PowerBass USA, Inc.

2133 S. Green Privado, Ontario, CA 91761

Tel: (909) 923-3868 – Fax (909) 923-8048

[www.powerbassusa.com](http://www.powerbassusa.com)